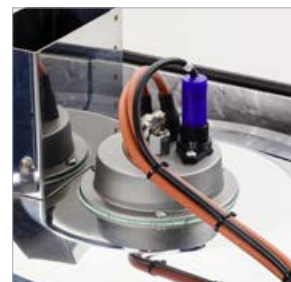


MAC TWIN PLANTMASTER

The Complete Twin Static Pressure Washer

- High quality twin hot static pressure washer
- Designed for heavy-duty twin applications
- Powder coated steel cabinet with lockable controls and steel door



KEY SPECIFICATION

Hot Water Twin Static

2 x 12ltr, 15ltr or 21ltr/min
Water Flow

2 x 100bar, 150bar or 200bar

230v or 400v Power Supply

Flame Failure and Leak Detection

Full Frost Protection



MAC TWIN PLANTMASTER



MAC21TECH

USER FRIENDLY CONTROL SYSTEM

FEATURES

- Variable total timed shutdown
- Soft start for heating elements
- Low water protection
- Anti-spike system
- Built in hour counter
- Fully bespoke design function - Siemens PLC

SIEMENS

STANDARD FEATURES

- Full frost protection and cabinet lagging
- 2 x Efficient M2 boiler systems
- Flame failure and leak detection
- 2 x 16 litre fuel tanks with low level sensors
- Professional Interpumps with ceramic pistons
- Industrial 1450rpm 4 pole electric Nicolini motors
- Automatic stop/start system
- Bypass and safety valve
- Burner control with flow switch and thermostat
- 24v low tension safety controls
- Mains power on lamp
- Choice of front door colours

CABINET FINISH

- Powder coated steel cabinet with lockable controls
- High quality matte paint finish
- Lockable powder coated steel front door
- Zinc phosphate steel pre-treatment for weather proofing

THE
PlantMaster
 RANGE



FLAME FAILURE AND
 LEAK DETECTION SYSTEM



30 SECOND
 AUTO STOP/START

	PLANTMASTER/T1	PLANTMASTER/T2	PLANTMASTER/T3
Water Flow	2 x 12lt per minute	2 x 15lt per minute	2 x 21lt per minute
Pressure	2 x 100bar, 1500psi	2 x 200bar, 3000psi	2 x 200bar, 3000psi
Motor Specification	2 x 3hp, 1450rpm	2 x 7.5hp, 1450rpm	2 x 10hp, 1450rpm
Chemical	High Pressure	High Pressure	High Pressure
Shutdown System	Auto Stop/Start	Auto Stop/Start	Auto Stop/Start
Temperature	0-100°C	0-100°C	0-100°C
Power	230v	400v	400v
Weight	460kg	500kg	540kg
Dimensions (h x w x d)	160 x 165 x 56cm	160 x 165 x 56cm	160 x 165 x 56cm